



Standing Seam Awnings

PRODUCT INFORMATION

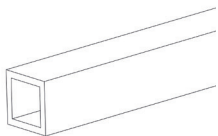
Standing seam metal roofing is one of the most durable and weather-tight roof systems available in the industry. With concealed fasteners and no nail holes, it ensures lasting protection against the elements.



Standing Seam Awnings

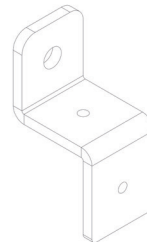
Humidity Resistance.
Water Immersion Resistance.
Chemical Resistance.
Impact Resistance.
High Temperature Resistance.

MATERIALS



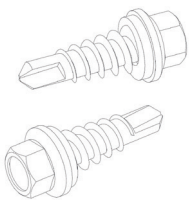
1" X 1" x 24' Aluminum Square Tube

Rounded corners to assure fabric lasts longer.
Aluminum alloy 6063-T5.
Smooth sides and strong welds.
Provides resistant framing and low maintenance.



Aluminum Z Bracket

Tight dimensional tolerances.
Good for mounting application.
Excellent performance in vertical.



TEK #10 Screws

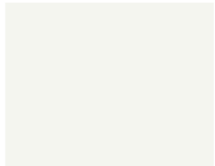
Secures metal without pre-drilling.
Fast and easy installation.
Protects the job's appearance
Many dimensions available.

FINISHES

PVDF Kynar500® or Hylar5000®.
Standard and Premium Colors Available.
Custom Colors are available upon request.

METAL ROOFING, WALL, AND PERIMETER EDGE FINISHES

QUICK-SHIP STOCKING COLORS



BONE WHITE



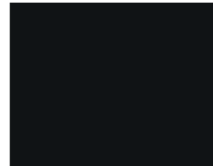
SIERRA TAN



MEDIUM BRONZE



ANTIQUE BRONZE



TRADITIONAL BLACK *L*



CITYSCAPE



SLATE GRAY



MUSKET GRAY



IRON ORE



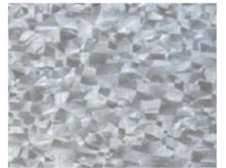
SILVER

P



WEATHERED ZINC

P



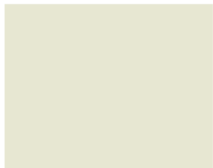
DREXLUME™

M

SPECIAL ORDER COLORS



SANDSTONE



ALMOND



BUCKSKIN



MANSARD BROWN



GRANITE

L



CHARCOAL



HEMLOCK GREEN



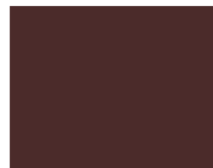
PATINA GREEN



FOREST GREEN



HARTFORD GREEN



BURGUNDY



COLONIAL RED



TERRA COTTA



CARDINAL RED



MILITARY BLUE



PACIFIC BLUE



INTERSTATE BLUE



AWARD BLUE



CHAMPAGNE

P



COPPER PENNY

P



AGED COPPER

P

P = PREMIUM

M = MILL FINISH

L = LOW GLOSS COLOR

• = Standard Product

✓ = CRRC Approved Finishes

Product Options	SR	SRI	24 ga x 20"	24 ga x 48"	22 ga x 48"	26 ga x 20"	26 ga x 27.5"	26 ga x 48"	0.032 x 20"	0.032 x 48"	0.040 X 48"	0.050 x 48"	0.063 x 48"	Cool Roof Rated
Standard Colors														
Almond	0.53	62	•	•	•					•	•	•		✓
Antique Bronze	0.29	28	•	•	•		•		•	•	•	•		
Traditional Black	0.20	17	•	•	•		•		•	•	•	•	•	
Bone White	0.67	81	•	•	•	•		•	•	•	•	•	•	✓
Buckskin	0.38	41	•	•				•	•					
Burgundy	0.24	23	•	•					•	•		•		
Charcoal	0.27	27	•	•					•	•	•	•		✓
Cityscape	0.44	49	•	•	•				•	•	•	•		✓
Colonial Red	0.32	34	•	•			•		•	•	•	•		✓
Forest Green	0.10	6	•	•	•		•		•	•	•	•		
Hartford Green	0.29	29	•	•					•	•	•	•		
Hemlock Green	0.29	29	•	•					•	•		•		✓
Interstate Blue	0.13	8	•	•					•	•		•		
Iron Ore	0.27	26	•	•			•		•	•	•	•		
Mansard Brown	0.29	29	•	•	•				•	•	•	•		✓
Medium Bronze	0.26	26	•	•	•		•		•	•	•	•	•	✓
Midnight Bronze	0.06	0	•	•							•			
Military Blue	0.29	29	•	•					•	•				✓
Musket Gray	0.31	32	•	•	•				•	•		•		✓
Pacific Blue	0.25	24	•	•					•	•				✓
Patina Green	0.33	34	•	•					•	•				✓
Sandstone	0.49	56	•	•	•				•	•	•	•	•	✓
Sierra Tan	0.36	39	•	•	•				•	•	•	•		✓
Slate Gray	0.37	40	•	•	•		•		•	•	•	•		✓
Terra Cotta	0.36	39	•	•					•	•		•		✓
Low Gloss Colors														
Granite	0.32	33	•	•	•				•	•	•	•		✓
Metallics														
Aged Copper	0.26	25		•					•	•				✓
Champagne	0.40	42		•					•	•	•	•		✓
Copper Penny	0.47	53	•	•					•	•	•	•		✓
Silver	0.49	54	•	•	•				•	•	•	•		✓
Weathered Zinc	0.26	23	•	•	•				•	•		•		✓
Zinc*	0.33	35	•	•					•	•	•	•		✓
Exotics - 10-year Color Fade Warranty														
Award Blue (10-YR)*	0.21	17	•	•						•		•		
Cardinal Red (10-YR)*	0.37	39	•	•					•	•		•		✓
Bare Products														
Drexlume™			•	•	•	•	•	•						
Mill Finished Aluminum										•	•	•	•	
Clear Anodized										•	•	•	•	
Dark Bronze Anodized										•	•	•	•	
Black Anodized											•	•	•	
Vintage®			•	•										
Urban Slate			•	•										
HDG G90			• 16ga x 48" x 120" • 18 ga x 48" x 120" • 20 ga x 48" x 120" • 22 ga x 48" x 120"											

- High-performance painted metal roofing and perimeter edge products.
- Standard sheets come in 48" x 120".
- 35-year paint warranty on Galvalume® and Aluminum substrates, excluding Exotics. Ask about our Gold Standard Warranty.
- 25-year warranty on Drexlume™.

- Not all colors and gauges are stocked in all locations. Contact your local sales rep for specific stocking information and special requests including 22" coils, and custom gauges and widths.
- Custom colors available.
- Oil canning is not a cause for rejection.

SHERWIN-WILLIAMS
Coil Coatings