

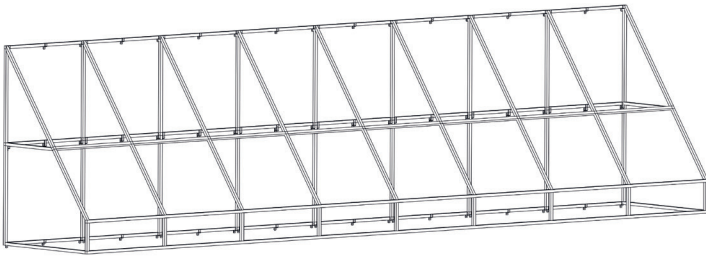


Stationary Fabric Awnings

PRODUCT INFORMATION

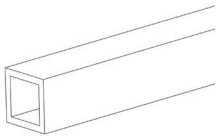
A durable, weather-resistant extension that features a timeless design and adds unique aesthetic appeal.

Stationary Fabric Awnings



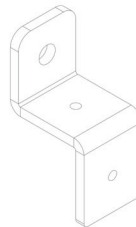
STATIONARY FABRIC AWNINGS

MATERIALS



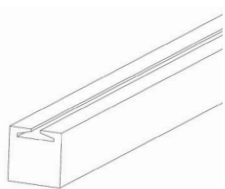
1" X 1" x 24' Aluminum Square Tube

Rounded corners to assure fabric lasts longer.
Aluminum alloy 6063-T5.
Smooth sides and strong welds.
Provides resistant framing and low maintenance.



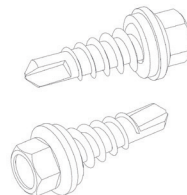
Aluminum Z Bracket

Tight dimensional tolerances.
Good for mounting application.
Excellent performance in vertical.



1" x 1" x 24' Staple In Channel

Rounded corners to assure fabric lasts longer.
Aluminum alloy 6063-T5.
Smooth sides and strong welds.
Provides resistant framing and low maintenance.



TEK #10 Screws

Secures metal without pre-drilling.
Fast and easy installation.
Protects the job's appearance
Many dimensions available.



FABRIC OPTIONS

Acrylic Fabric

100% solution dyed acrylic
UV and Fade Resistant
Water and Mildew Repellent.
Stain resistant
Breathable to prevent condensation.
Minimal Shrinking or stretching
Stain resistant
Heat Sealable
Finish/Coating: Fluorocarbon
10-year limited warranty

Fire Retardant Fabric

Flame and UV Resistant.
Highly water repellent and soil/stain
release finish.
Flexible in hot and cold conditions.
5-year warranty.
Weight: 8.75 oz/sq. Yard
Mildew Resistant
Available in 18 colors and patterns.

Backlit Vinyl Fabric

Base fabric: Polyester, Woven, Vinyl
Coated.
High Tear and Tensile strength for
maximum performance.
Soft and flexible material.
Water and Mildew Repellent.
Heat Sealable and Weldable.
Printable and Accepts PSA Films.
Flame Resistance. Meets C.S.F.M NFPA 701
Available in 18 brilliant colors.
Weight: 15 oz./sq. yard.
5-year limited warranty.

OTHER OPTIONS

Solid Polycarbonate

1 Side UV Protected
Water resistant
Maintenance Free
Long lasting material
Available in solid and textured finish
Available Clear and in 4 more colors.